

## Eco Preparation Corner Work Table with Upstand - disassembled

ITEM # \_\_\_\_\_  
MODEL # \_\_\_\_\_  
NAME # \_\_\_\_\_  
SIS # \_\_\_\_\_  
AIA # \_\_\_\_\_



132851 (CTUD7N)

Work Table disassembled  
with upstand, 700mm,  
Corner Type

### Short Form Specification

Item No. \_\_\_\_\_

Worktop in 304 AISI stainless steel with upturned edges and under panel made of sound deadening material. Rear upstand h=100mm. Square section legs 40x40mm in 304 AISI stainless steel with adjustable feet. Delivered disassembled.

### Main Features

- Sturdiness, stability and reliability of table accurately tested.

### Construction

- Delivered in knock-down package.
- Constructed entirely in stainless steel to offer maximum durability.
- Wide range of taps are available to suit every need.

### Optional Accessories

- Set of 4 wheels (2 with brake) PNC 855150 ☐  
d. 100mm for tables and sinks  
(total height on wheels= 993 mm)

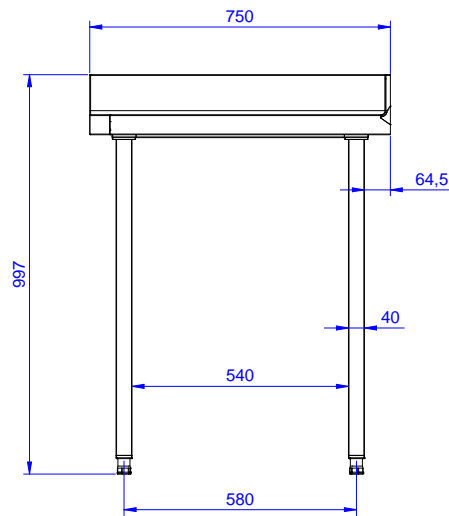
APPROVAL: \_\_\_\_\_



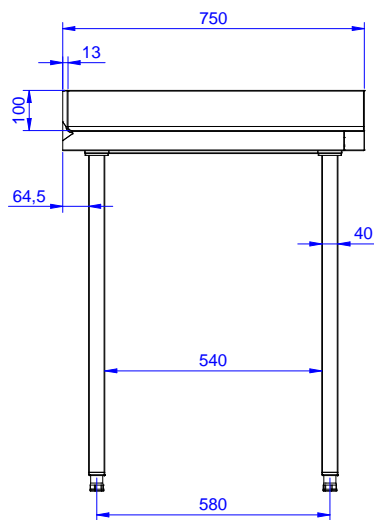
**Electrolux**  
PROFESSIONAL

## Eco Preparation Corner Work Table with Upstand - disassembled

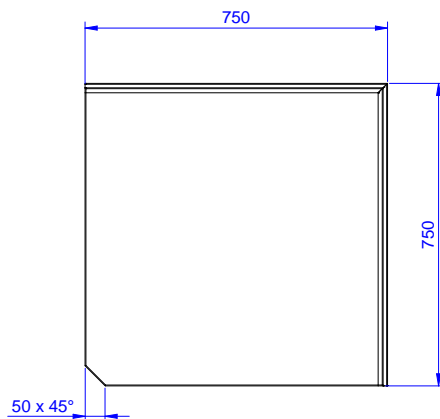
Front



Side



Top



### Key Information:

External dimensions, Width:	
132851 (CTUD7N)	750 mm
External dimensions, Depth:	750 mm
External dimensions, Height:	900 mm
Worktop thickness:	50 mm
Worktop/Shelf radius:	90°
Net weight:	33 kg

Eco Preparation  
Corner Work Table with Upstand - disassembled

The company reserves the right to make modifications to the products without prior notice. All information correct at time of printing.

2025.04.09